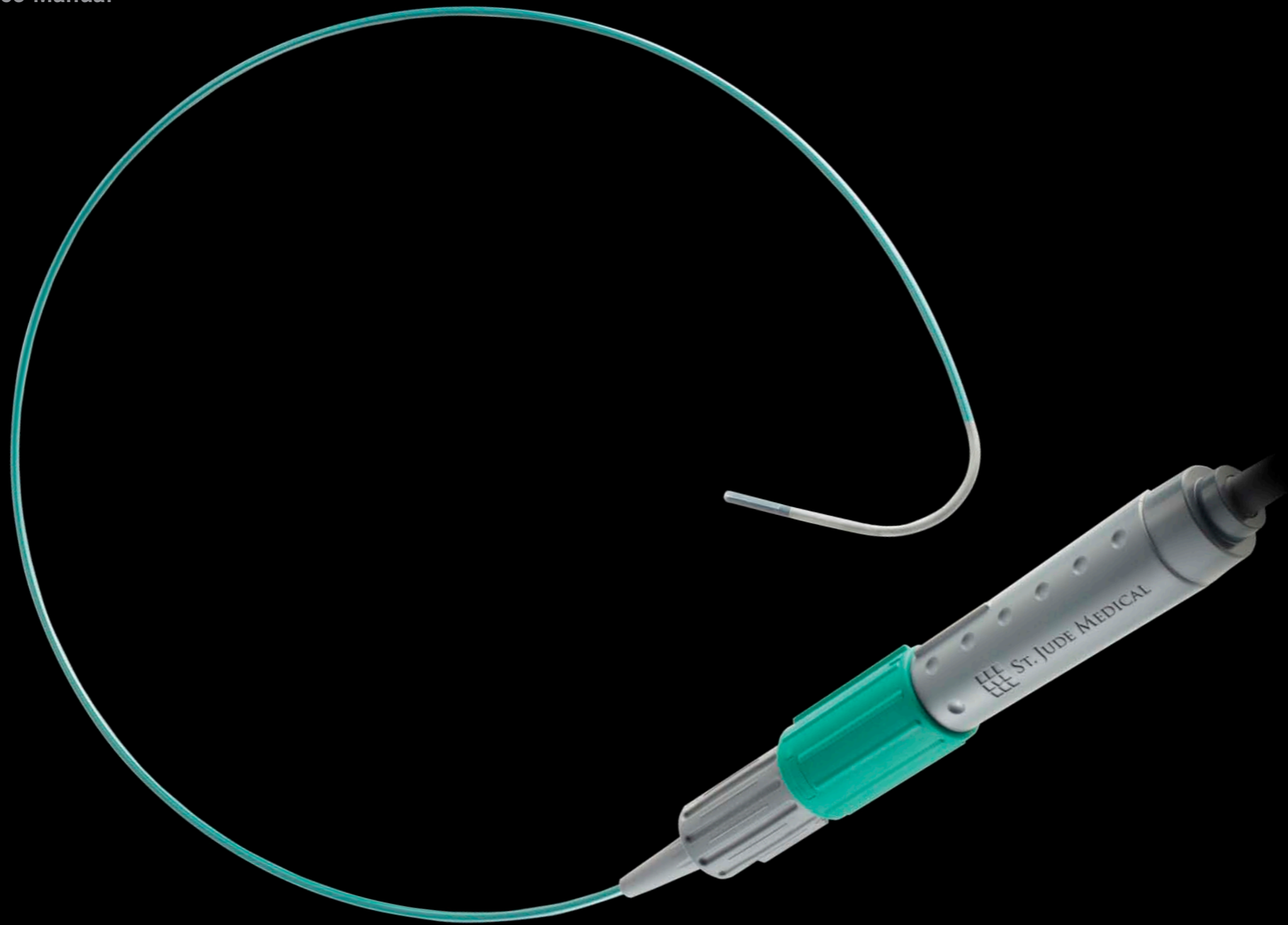


ViewFlex™ Xtra ICE Catheter  
Positioning Reference Manual



ST. JUDE MEDICAL™

MORE CONTROL. LESS RISK.

# ViewFlex™ Xtra ICE Catheter

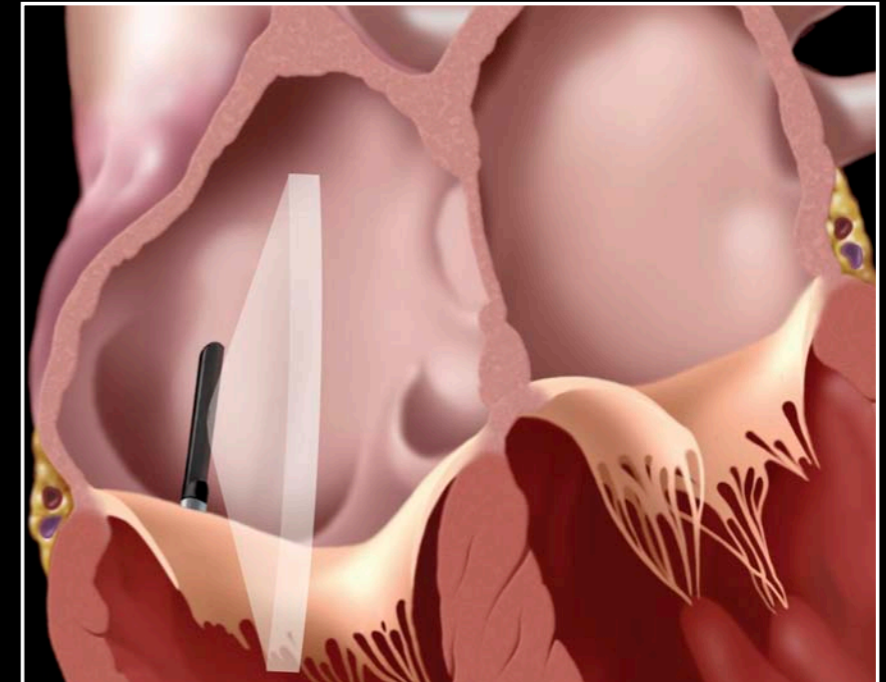
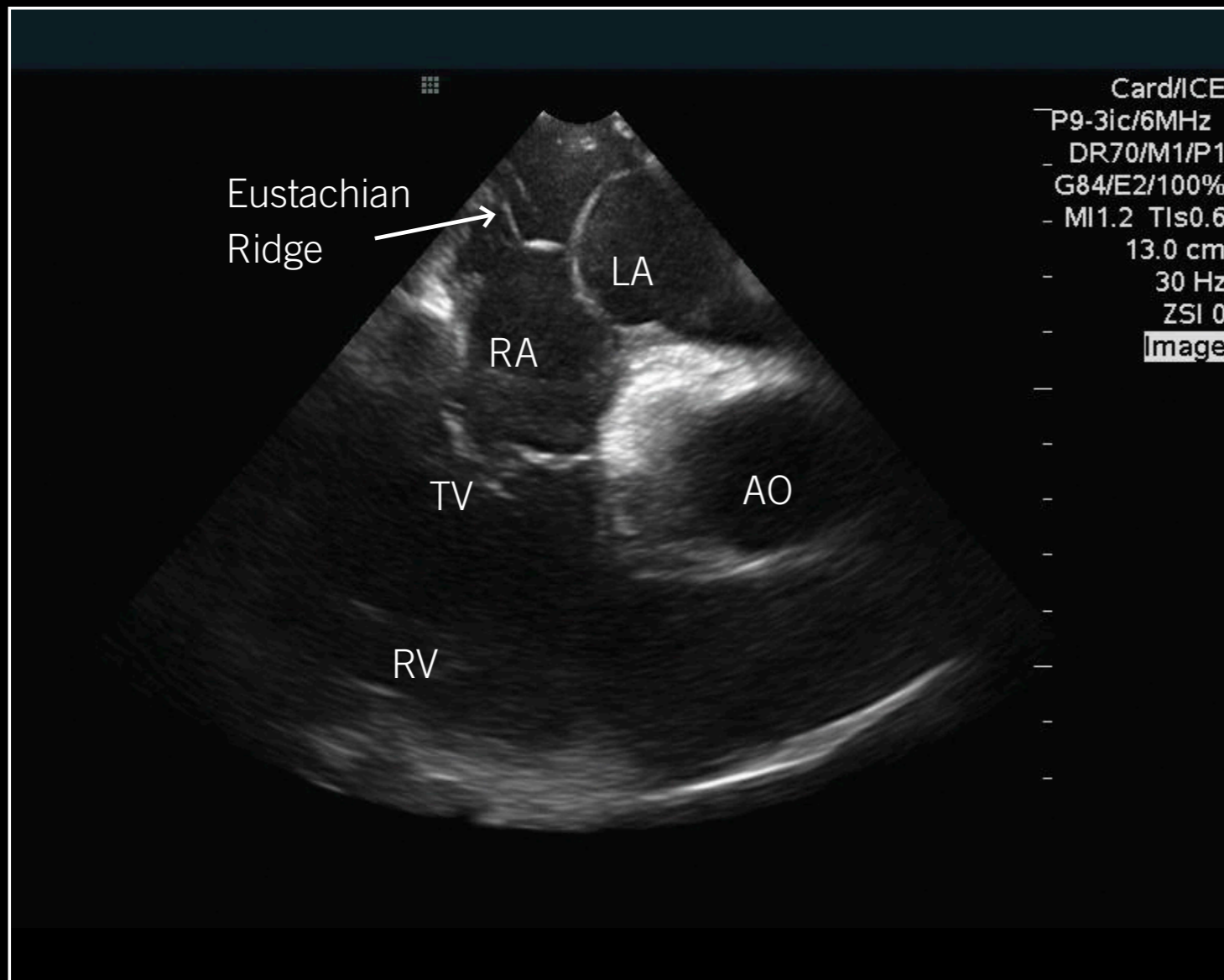
The ViewFlex Xtra ICE Catheter, which is compatible with the ViewMate™ Z and ViewMate™ II ultrasound consoles, provides visualization of cardiac structures and blood flow within the heart during electrophysiology and interventional cardiology procedures. This “Positioning Reference Manual” can be used as a guide to understanding the technique of ICE imaging. The diagrams and ultrasound images represented in the following text display the approximate cardiac anatomy seen during a typical ICE overview of the heart. Precise movements in catheter angulations and rotations, for a specific view, may differ with individual cardiac anatomy.

## Index

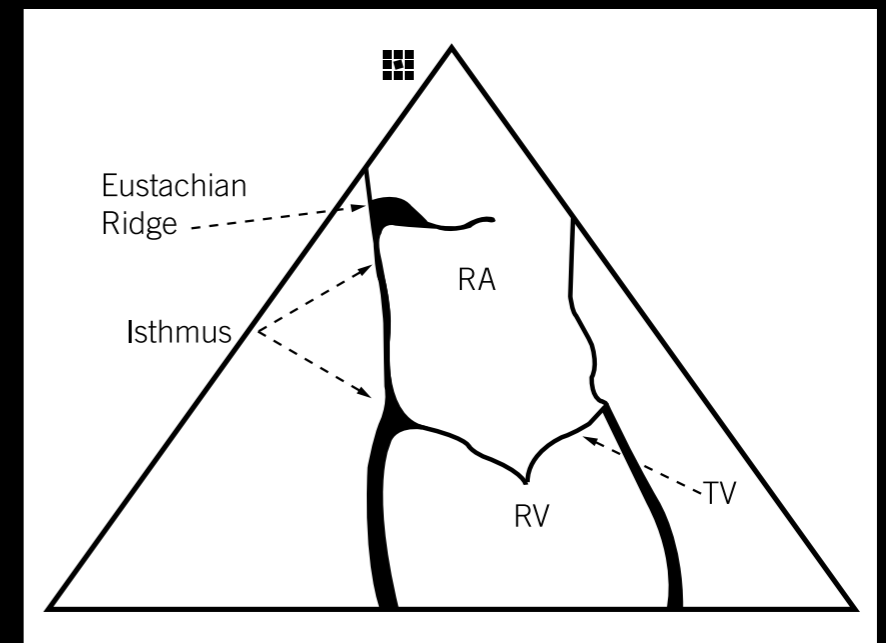
1. Eustachian Ridge
2. Home View
3. Aorta, Right Ventricular Outflow Tract
4. Coronary Sinus
5. Intra-Atrial Septum, Fossa Ovalis
6. Mitral Valve, Left Atrial Appendage
7. Left Pulmonary Veins
8. Right Pulmonary Veins
9. Superior Vena Cava, Right Atrium
10. Left Ventricle Long Axis

# Eustachian Ridge

- As the ICE catheter enters the right atrium, the eustachian ridge is the first anatomical structure that can be visualized.

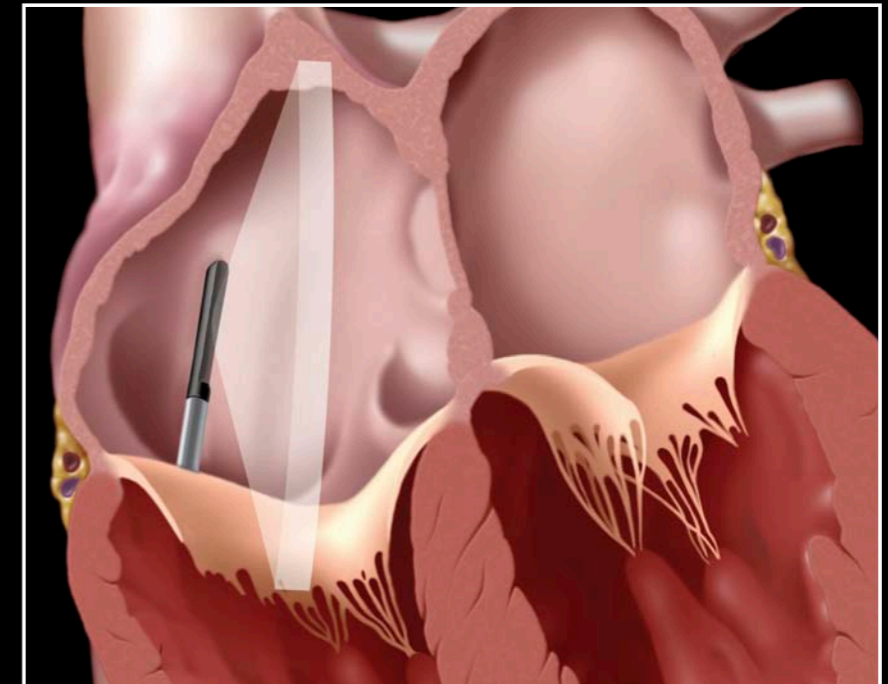
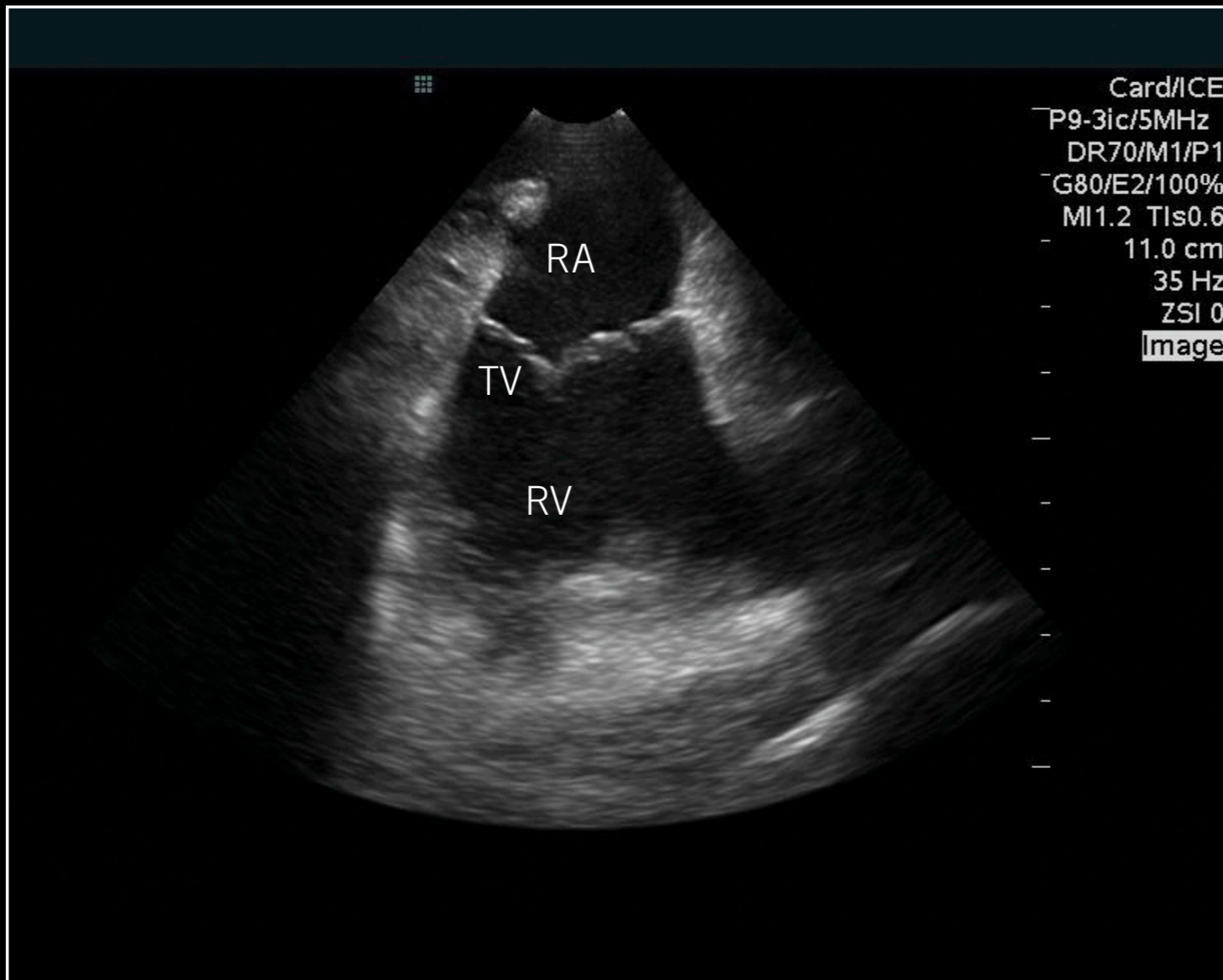


## Orientation

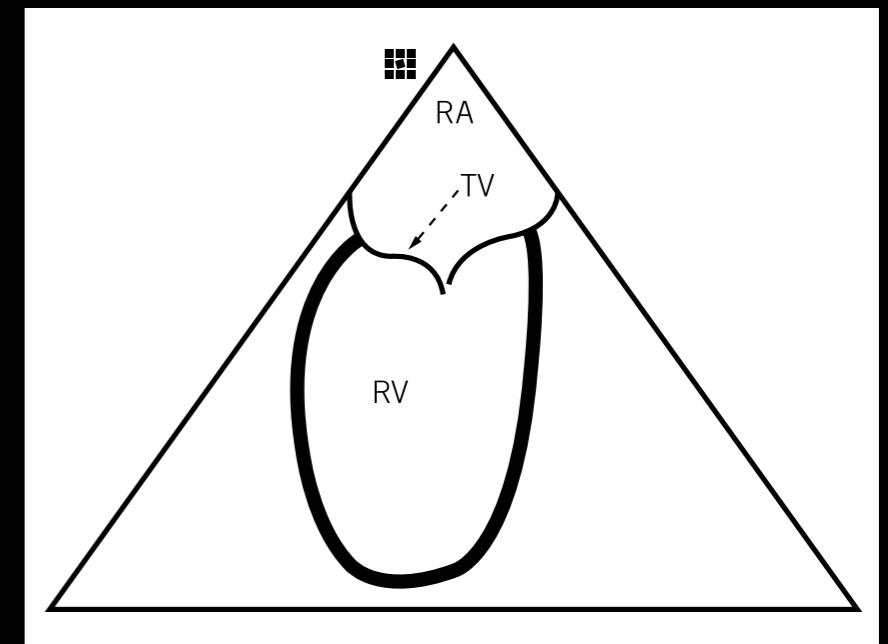


# Home View

- Continue advancing the catheter to the level of the mid-right atrium
- The ultrasound array should be facing anteriorly
- There is no flexion on the catheter

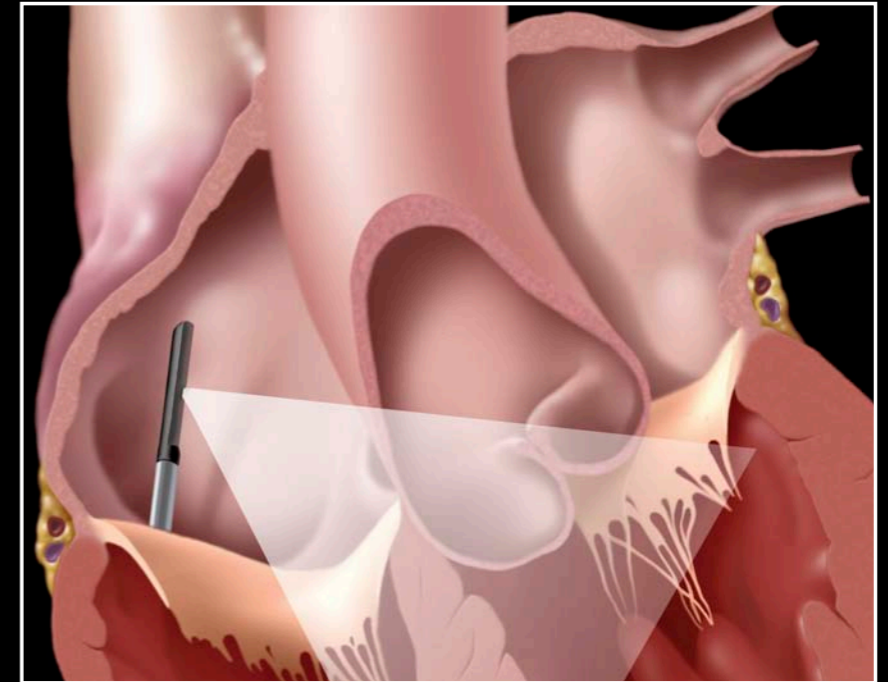
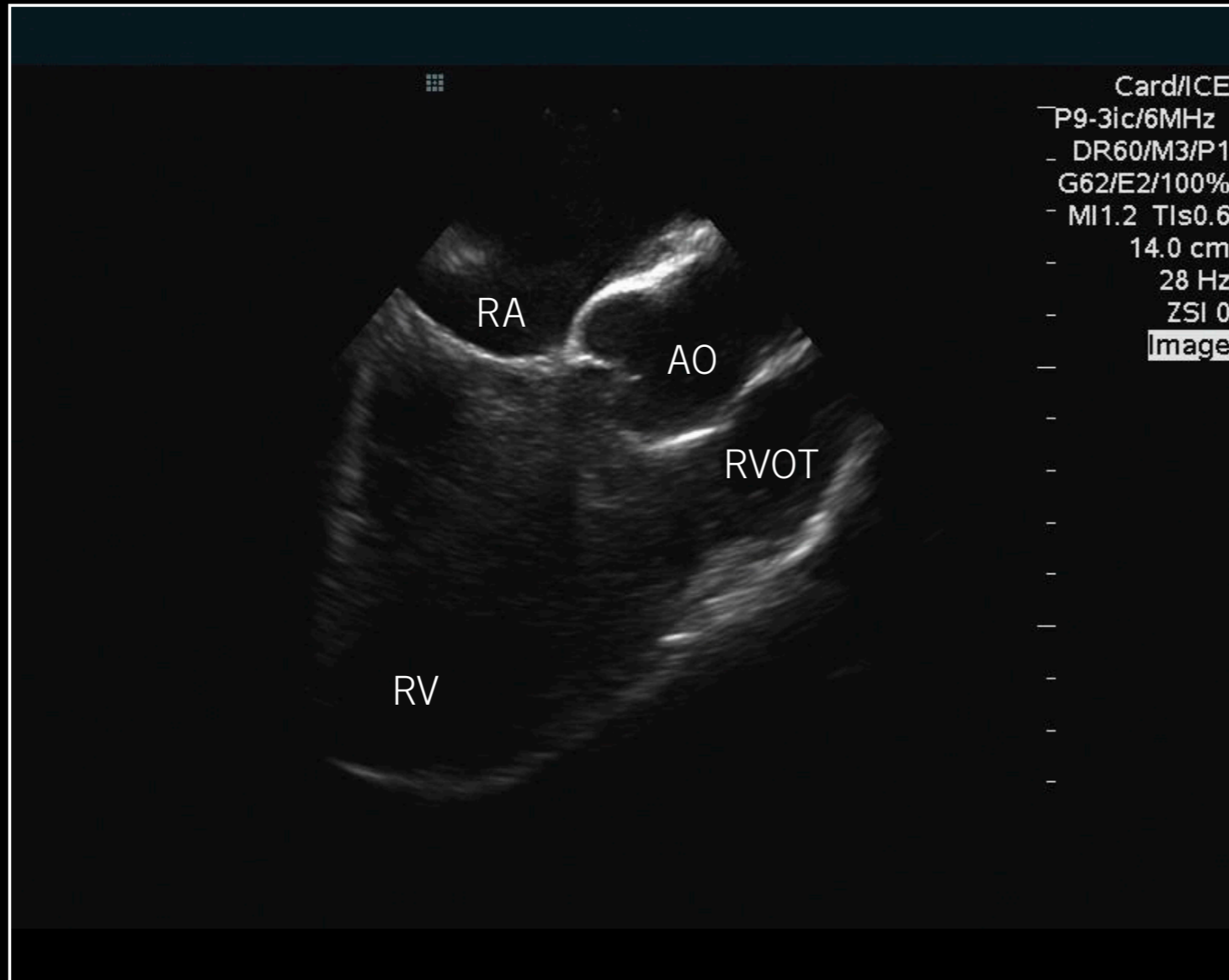


Orientation

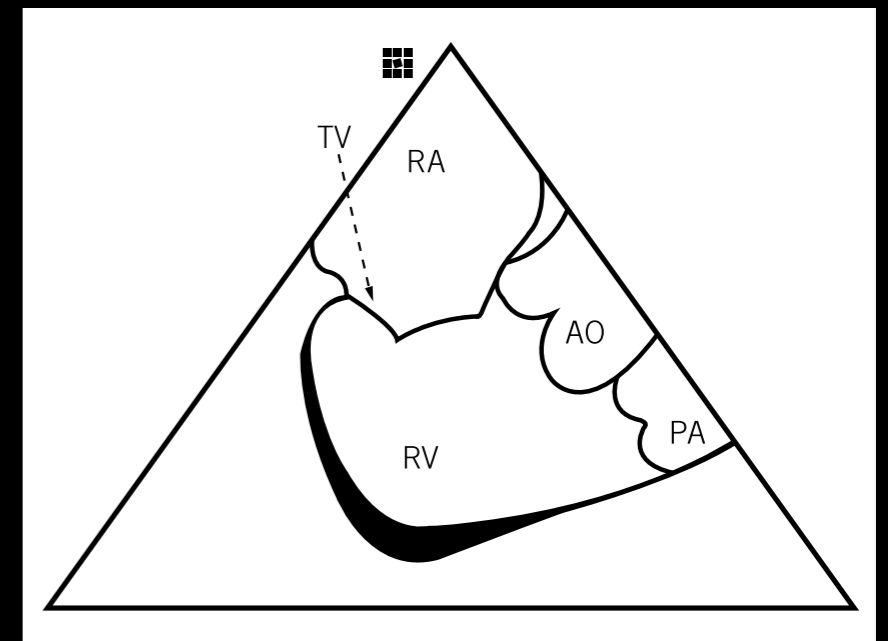


# Aorta, Right Ventricular Outflow Tract

- From the “Home View,” rotate the catheter clockwise
- No flexion on the catheter is necessary

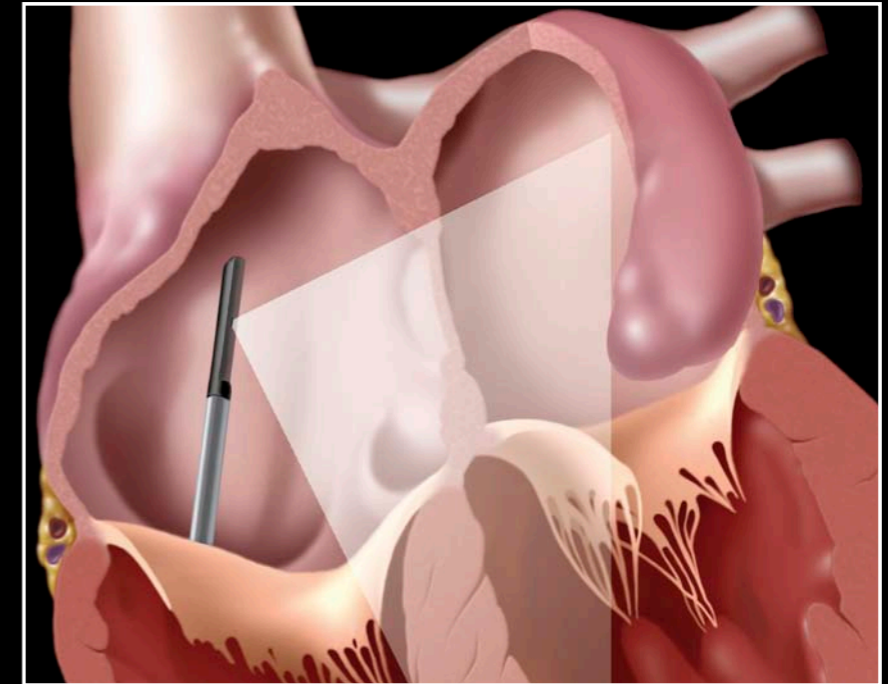
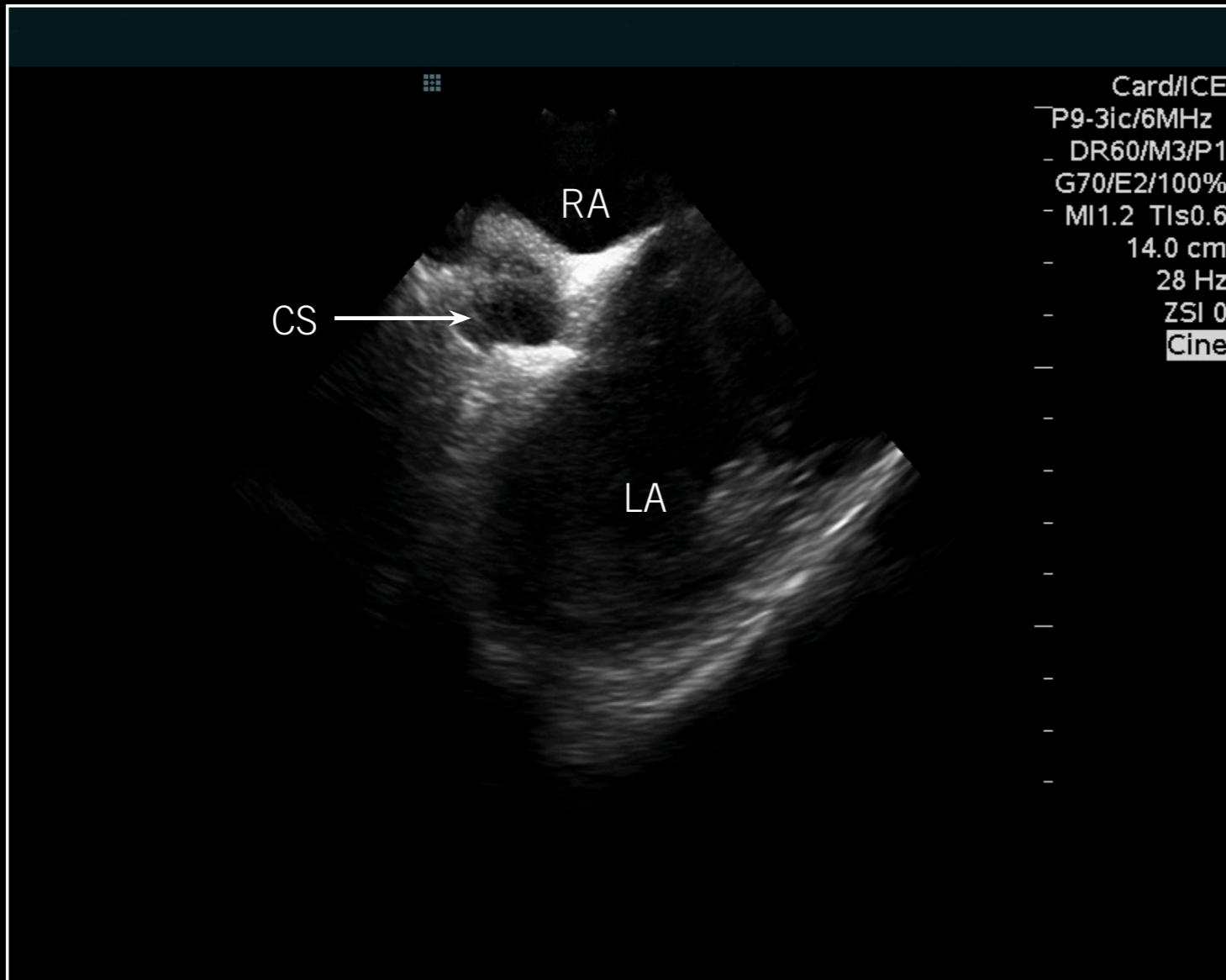


Orientation

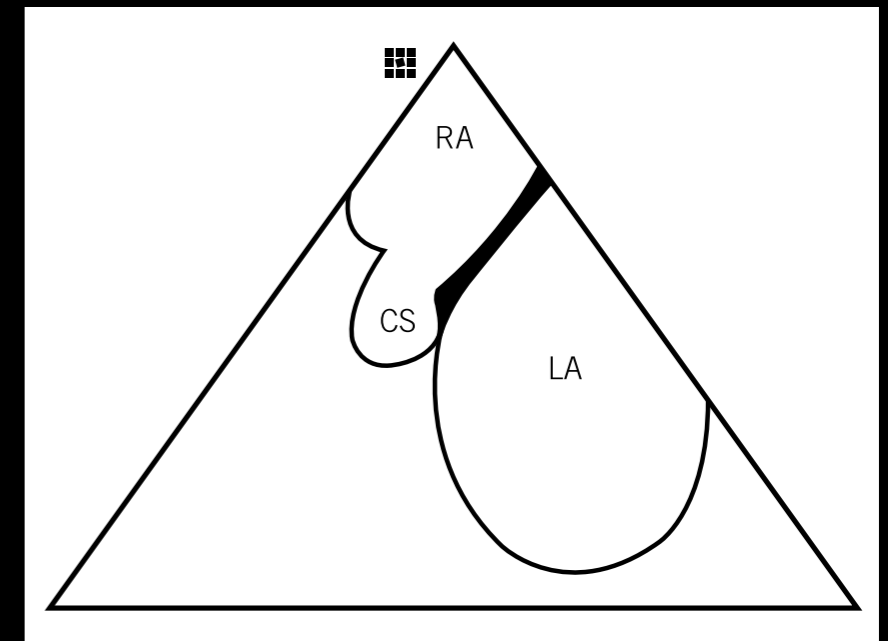


# Coronary Sinus

- Gradually rotate the catheter clockwise to visualize the ostium of the coronary sinus

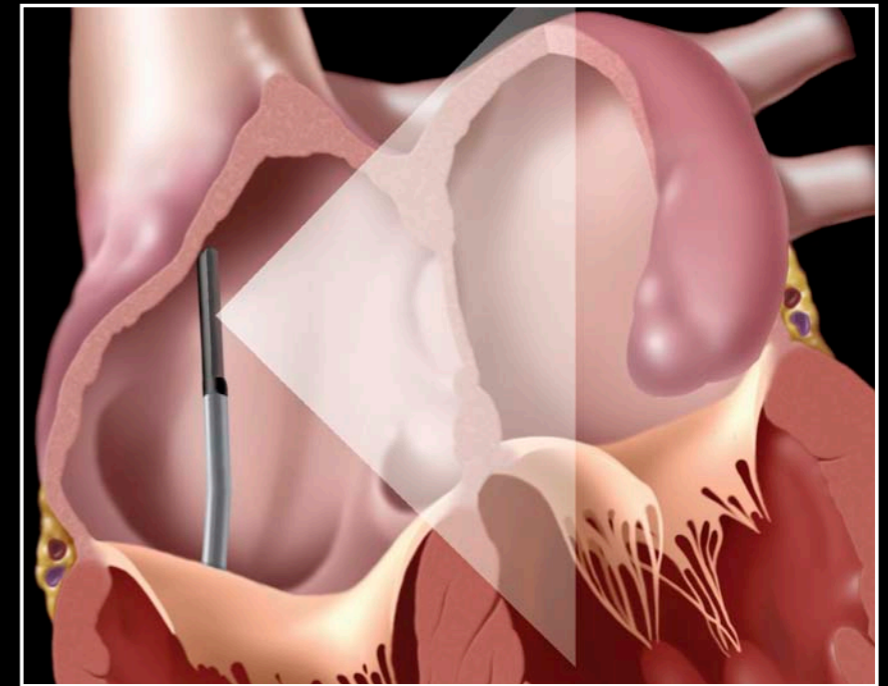
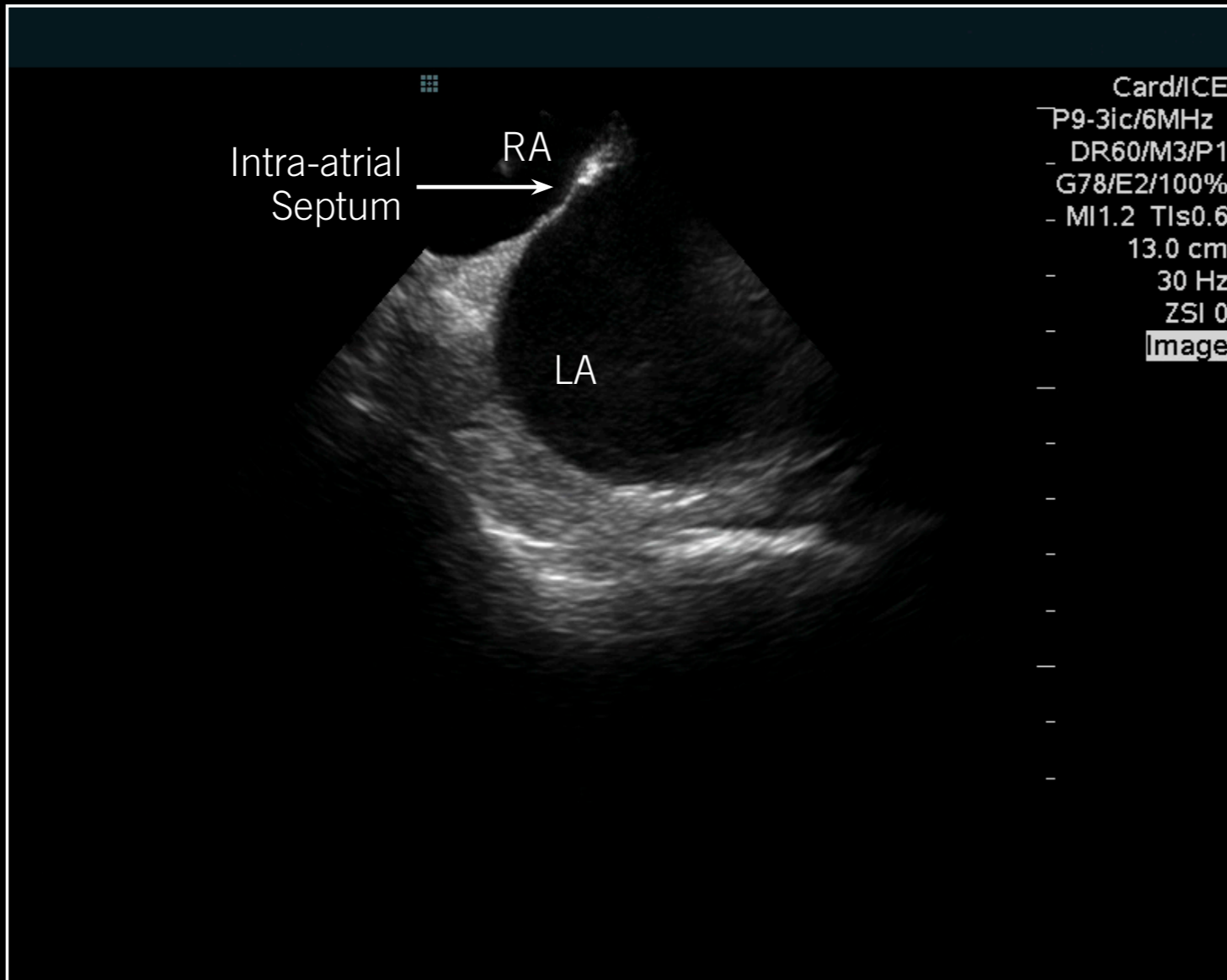


Orientation

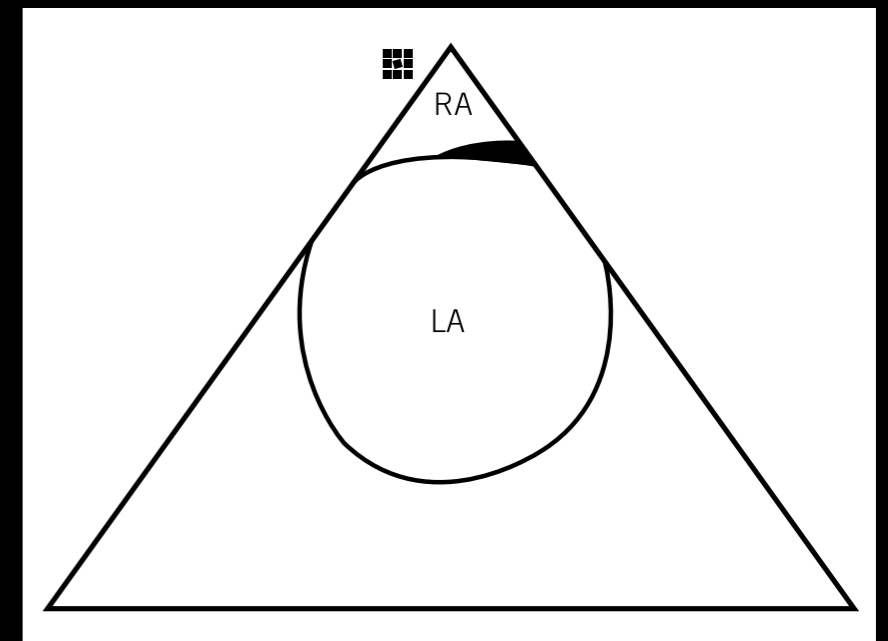


# Intra-atrial Septum, Fossa Ovalis

- Rotate the catheter clockwise
- Posterior flexion can be used if necessary to view more of the right atrium

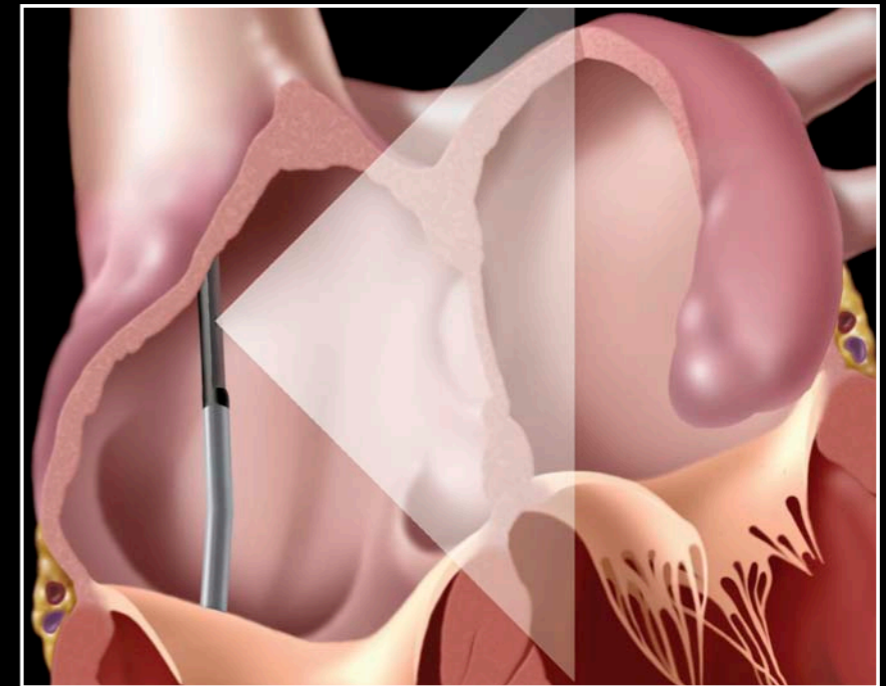
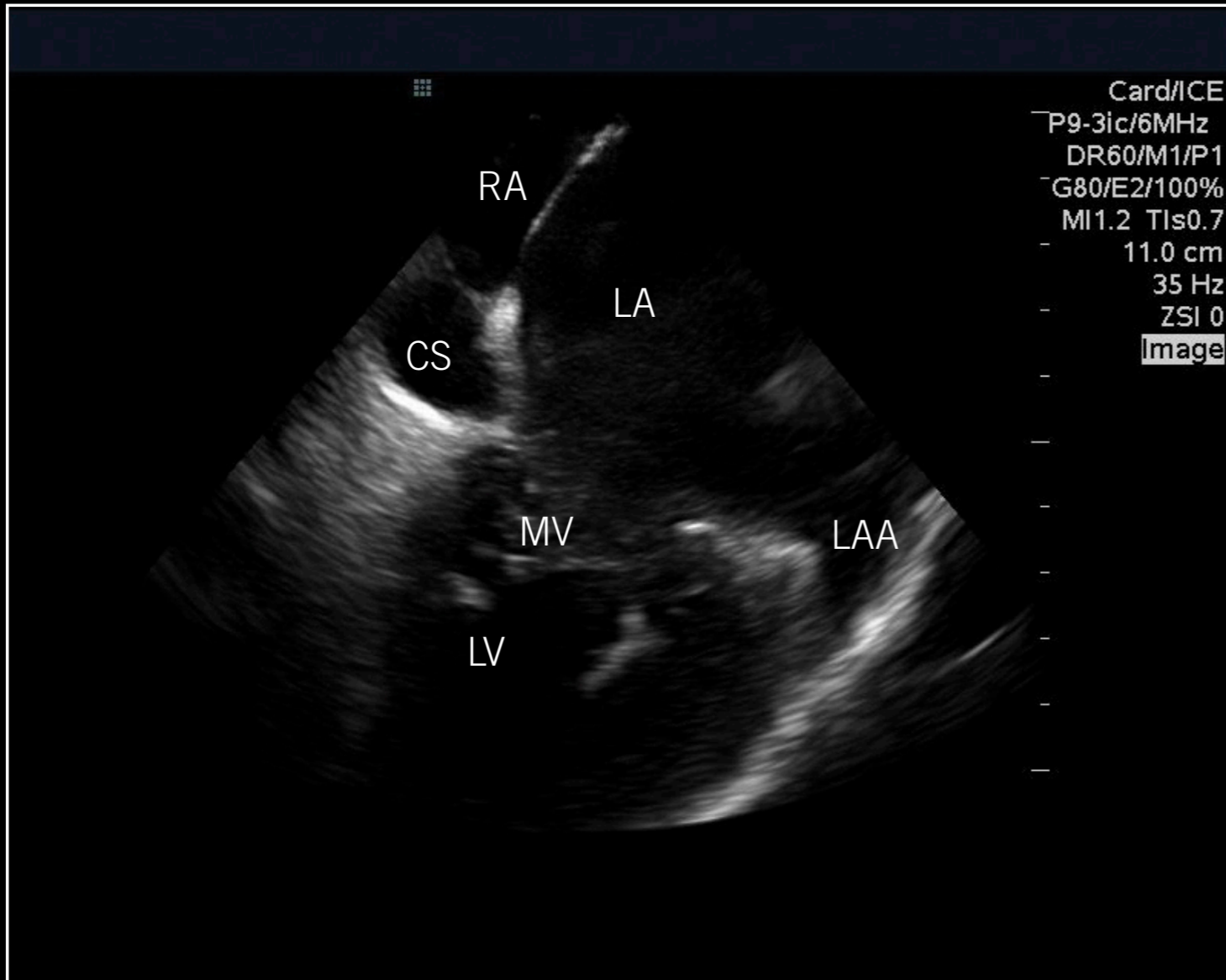


Orientation

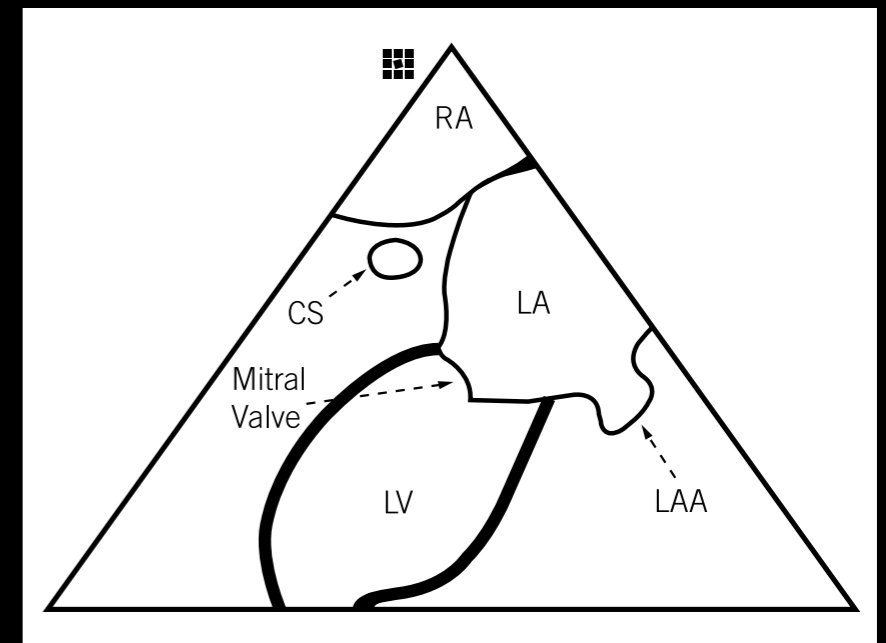


# Mitral Valve, Left Atrial Appendage

- From the "Intra-atrial Septum View," gradually rotate the catheter clockwise



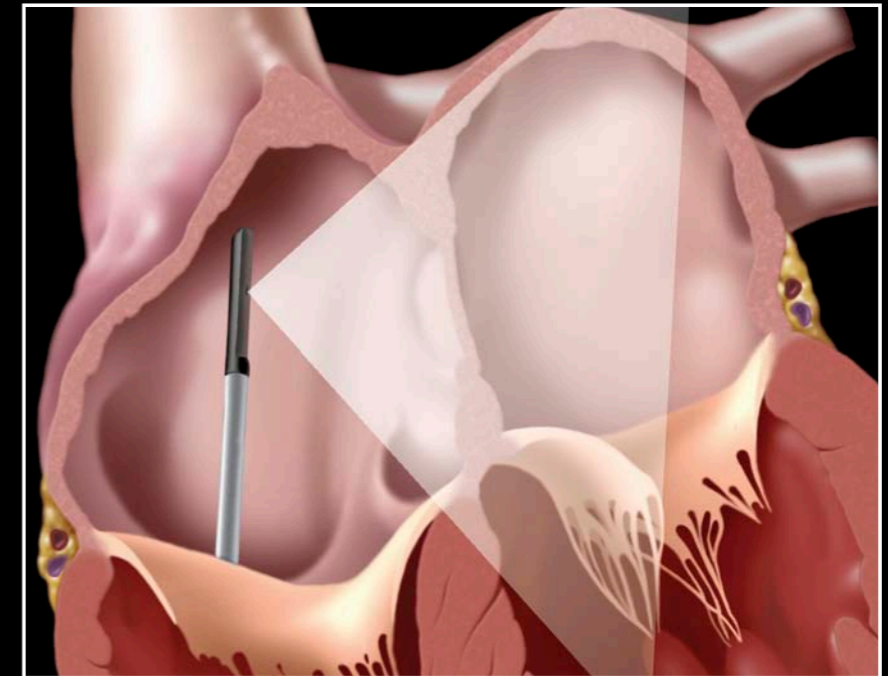
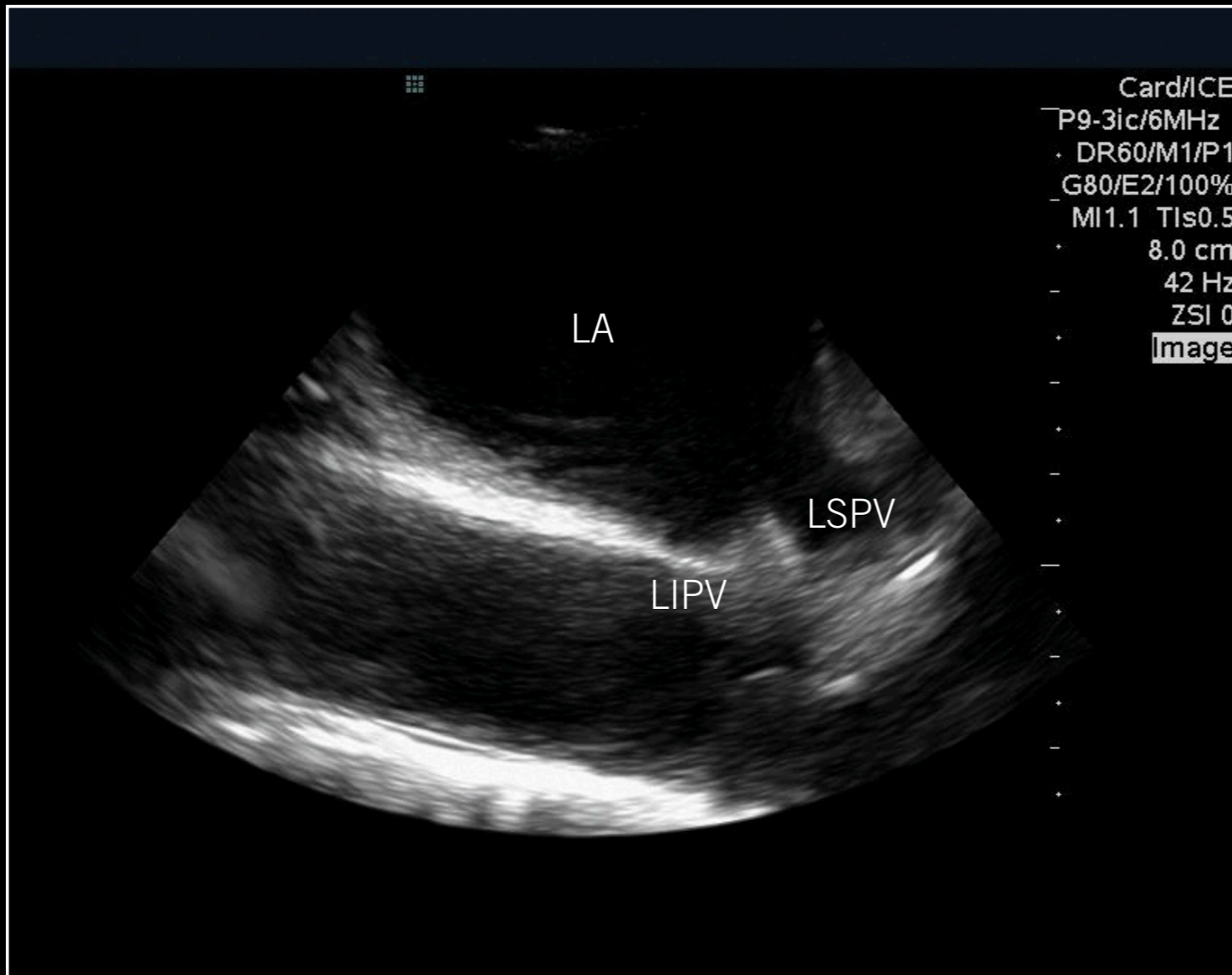
Orientation



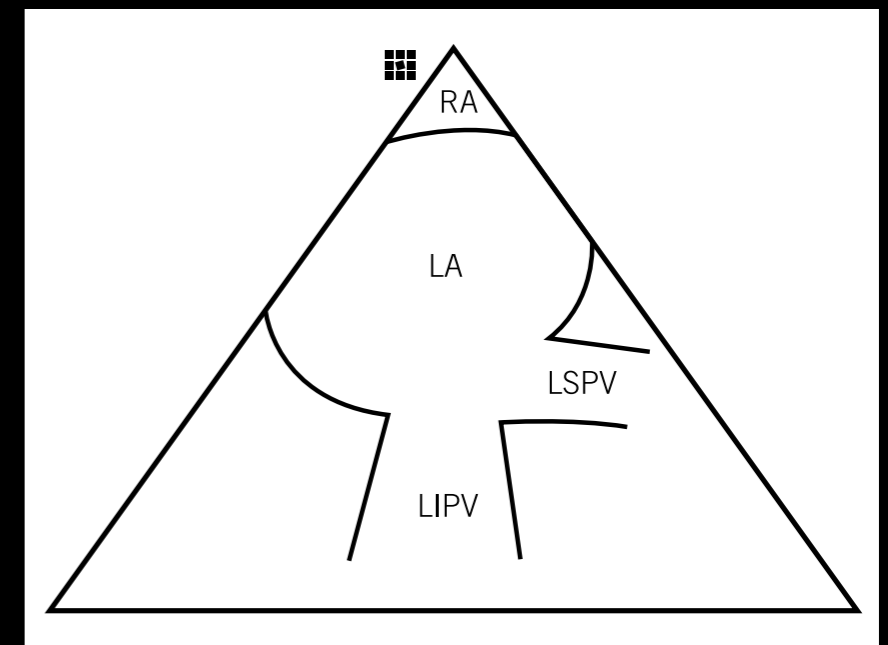


# Left Pulmonary Veins

- From the “Left Atrial Appendage View,” remove the posterior flexion applied to the catheter
- Slightly rotate the catheter clockwise
- Color Doppler can be used to identify the left pulmonary veins

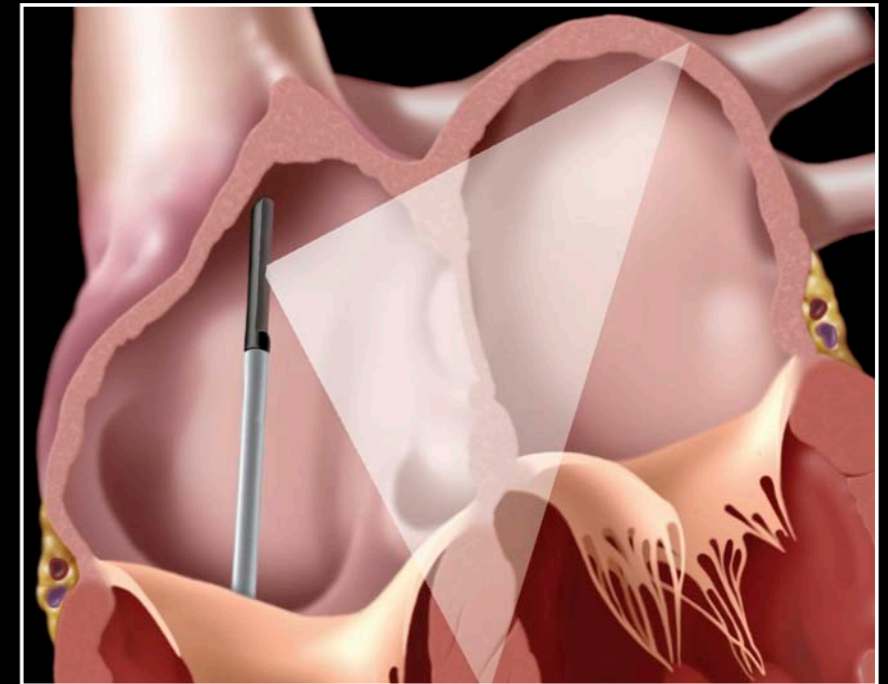
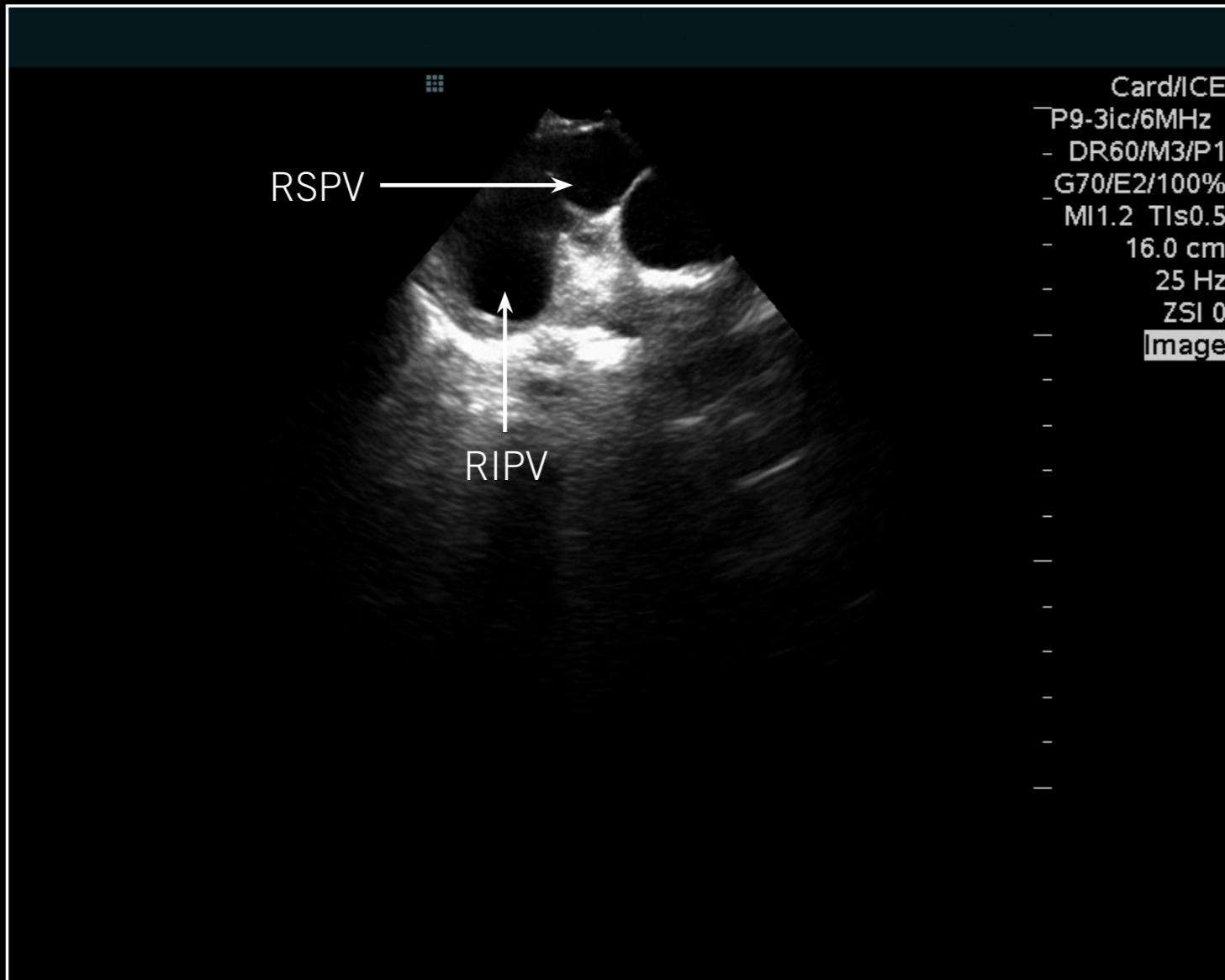


Orientation

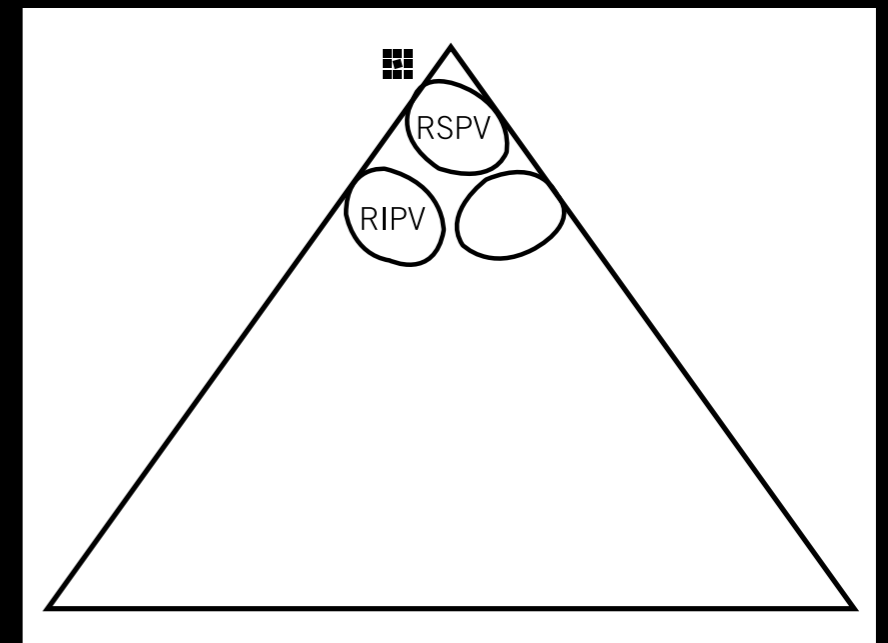


# Right Pulmonary Veins

- Rotate the catheter clockwise past the left pulmonary veins
- Advance the catheter slightly to obtain a better view of the right pulmonary veins

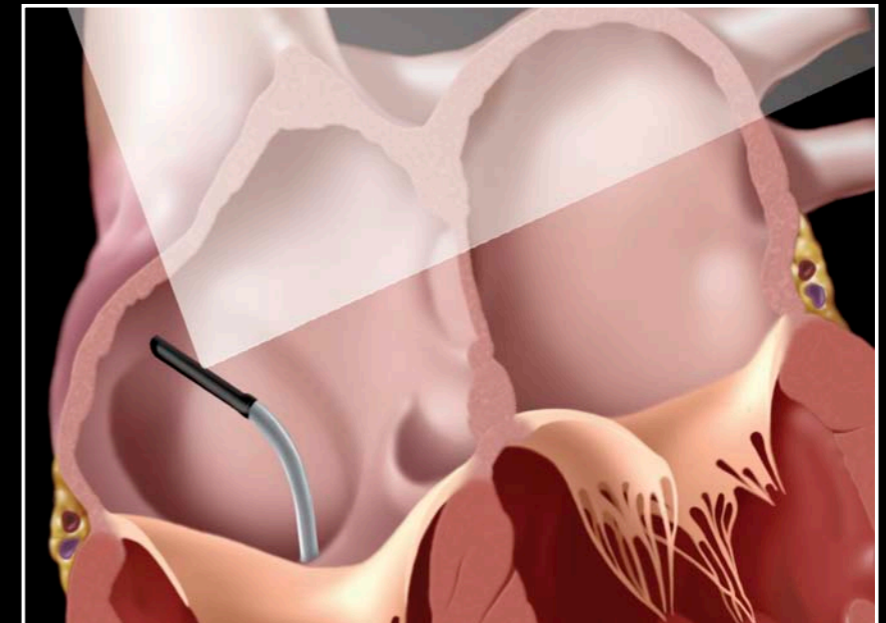
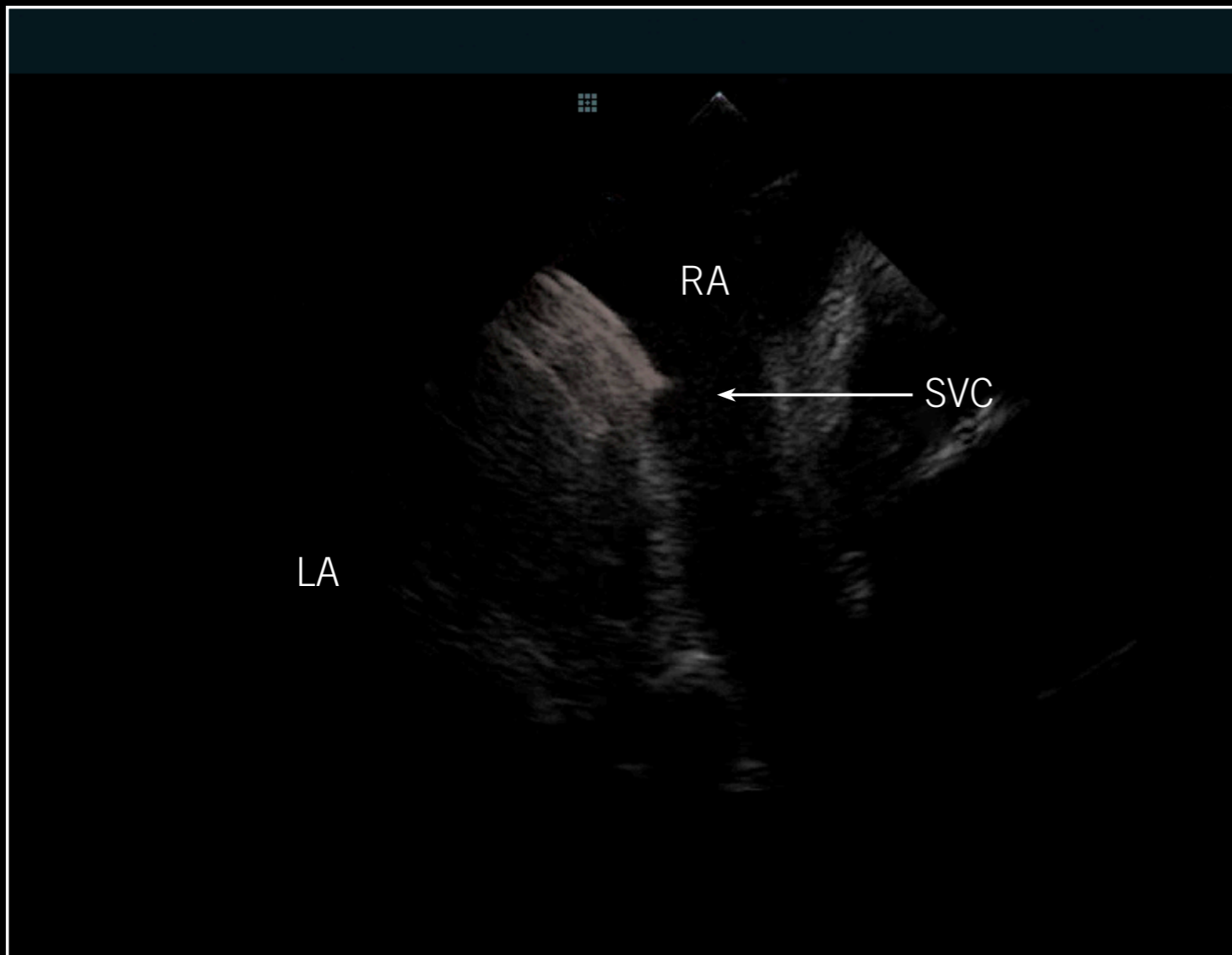


Orientation

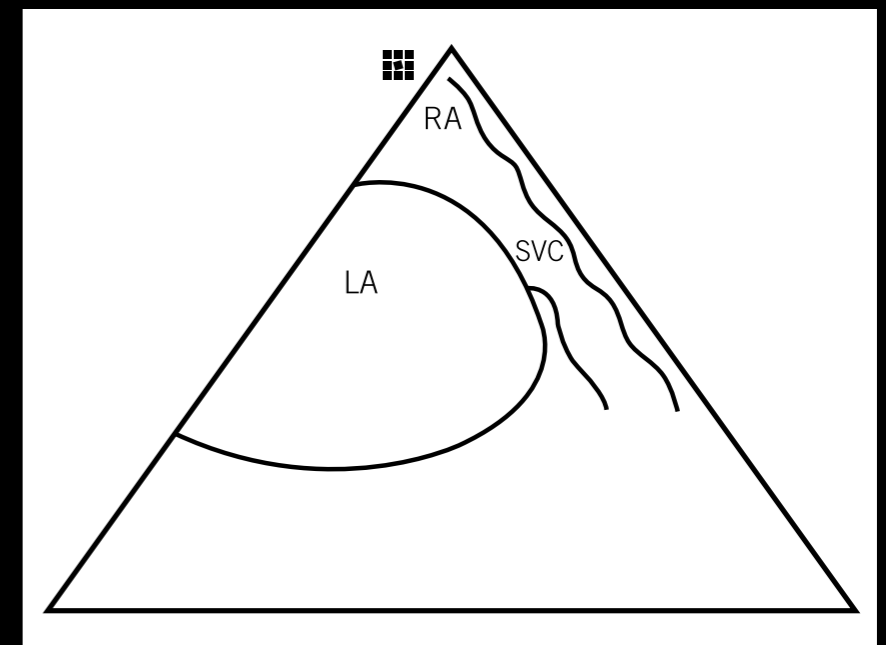


# Superior Vena Cava, Right Atrium

- Place the catheter in the mid-right atrium
- Flex the catheter posteriorly
- If necessary, rotate the catheter counter-clockwise to obtain a better view of the superior vena cava and right atrium

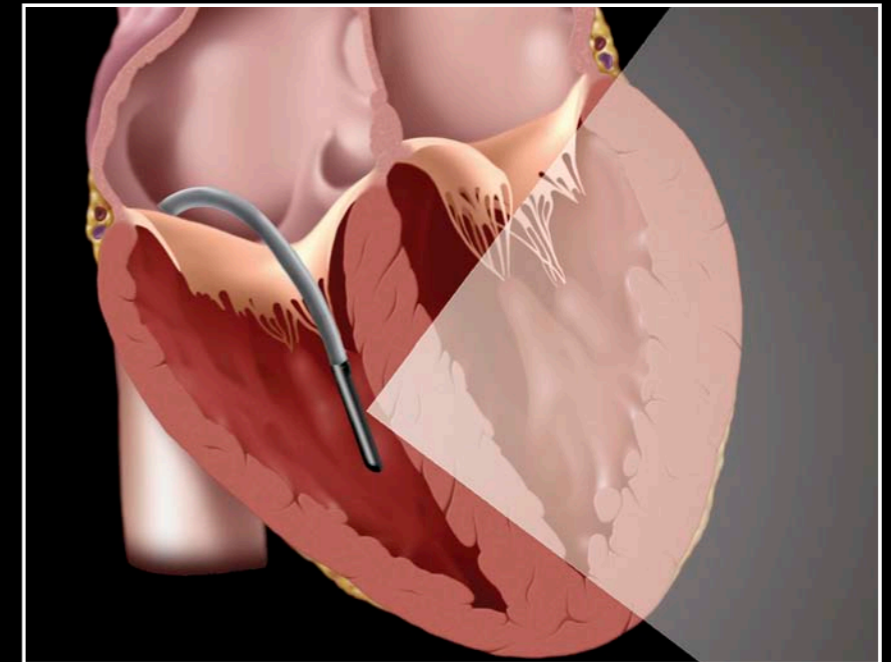
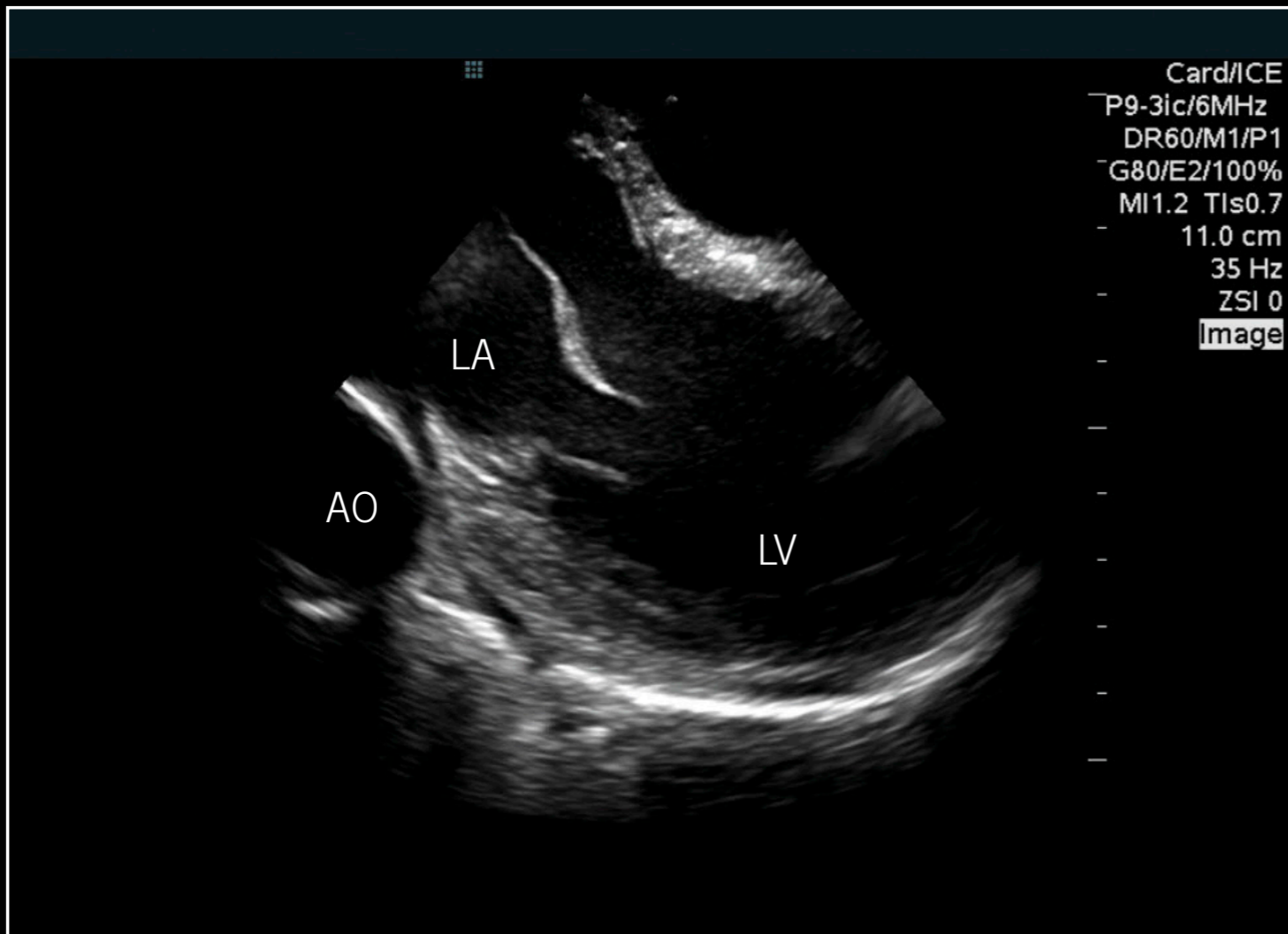


Orientation

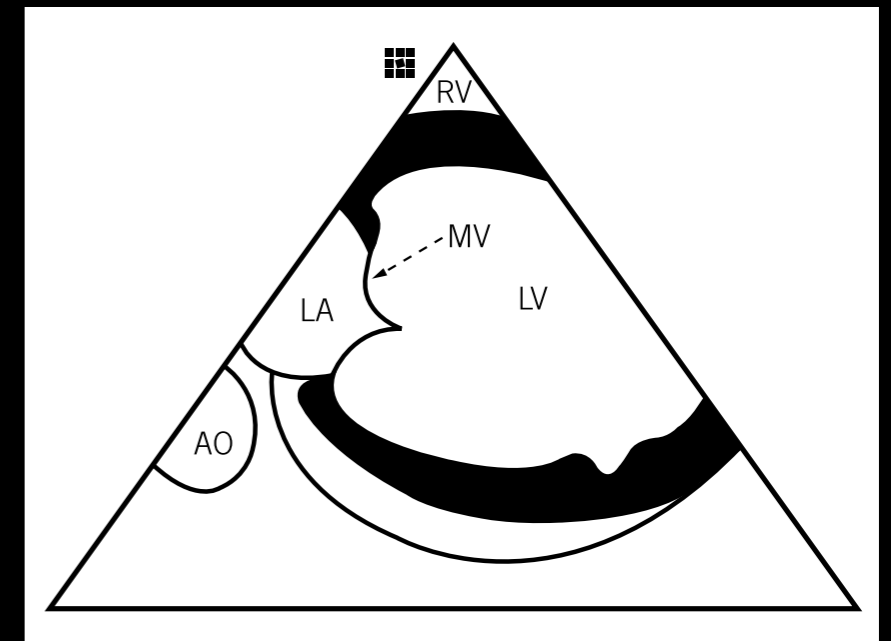


# Left Ventricle Long Axis

- Re-establish Home View
- Once the tricuspid valve is clearly visible, flex the catheter anteriorly (toward tricuspid valve)
- Utilizing fluoroscopy and ultrasound advance the catheter past the tricuspid valve annulus into the right ventricle and then remove anterior flexion
- Rotate the catheter clockwise until the intraventricular septum comes into view



## Orientation



ATRIAL FIBRILLATION

CARDIAC RHYTHM MANAGEMENT

CARDIOVASCULAR

NEUROMODULATION

**Global Headquarters**

One St. Jude Medical Drive  
St. Paul, Minnesota 55117  
USA  
+1 651 756 2000  
+1 651 756 3301 Fax

**Atrial Fibrillation Division**

One St. Jude Medical Drive  
St. Paul, Minnesota 55117  
USA  
+1 651 756 2000  
+1 651 756 3301 Fax

**U.S. Division**

6300 Bee Cave Road  
Bldg. Two, Suite 100  
Austin, TX 78746  
USA  
+1 512 286 4000  
+1 512 732 2418 Fax

**St. Jude Medical  
Coordination Center BVBA**

The Corporate Village  
Da Vincilaan 11 Box F1  
1935 Zaventem  
Belgium  
+32 2 774 68 11  
+32 2 772 83 84 Fax

**St. Jude Medical Brazil Ltda.**

Rua Frei Caneca, 1380  
7° ao 9° andares  
01307-002 - São Paulo (SP)  
Brazil  
+55 11 5080 5400  
+55 11 5080 5423 Fax

**St. Jude Medical (Hong Kong) Ltd.**

Suite 1608, 16/F Exchange Tower  
33 Wang Chiu Road  
Kowloon Bay  
Kowloon  
Hong Kong SAR  
+852 2996 7688  
+852 2956 0622 Fax

[SJMprofessional.com](http://SJMprofessional.com)



**ST. JUDE MEDICAL™**

MORE CONTROL. LESS RISK.

**Rx Only**

**Brief Summary:** Please review the Instructions for Use prior to using these devices for a complete listing of indications, contraindications, warnings, precautions, potential adverse events, and directions for use.

ViewMate Z, ViewMate II, ViewFlex, ST. JUDE MEDICAL, the nine-squares symbol and MORE CONTROL. LESS RISK. are trademarks and service marks of St. Jude Medical, Inc. and its related companies. ©2012 St. Jude Medical. All Rights Reserved.

Item 100057675 Rev A