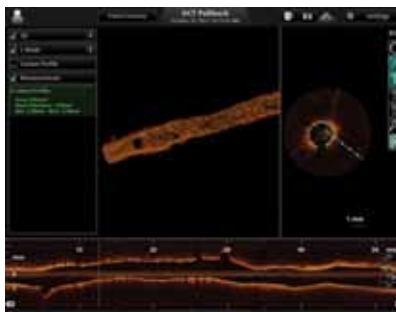


# ILUMIEN™ OPTIS™

## PCI Optimization System

### PRODUCT BENEFITS

- The next-generation ILUMIEN PCI optimization platform from St. Jude Medical
- Proven FFR and OCT technologies on one platform
  - Wireless FFR setup with PressureWire™ Aeris™ and Wi-Box™ in one or multiple labs
  - OCT imaging with new 75 mm survey mode and 54 mm high-resolution mode
  - Seamless integration of FFR and OCT with guided workflows for exceptional ease-of-use
- Advanced OCT automated measurements
  - Immediate and accurate automatic lumen boundary detection
  - Lumen Profile Display provides immediate view of lumen contours
  - Stent planning workflow with automated Minimum Lumen Area frame location and measurements
  - Real-time 3D image reconstruction of vessel and lumen



### GENERAL PRODUCT INFORMATION

The compact, mobile console contains all the elements of the ILUMIEN OPTIS system, including:

- ILUMIEN OPTIS imaging engine; high-performance data acquisition and image processing PC; application software; wireless FFR receivers
- New, high-speed DOC (drive-motor and optical controller) OCT catheter interface allows tableside initiation of pullback
- Dual monitor displays plus remote video output for multiple viewing sightlines
- DICOM and local media archiving

### SPECIFICATIONS

#### IMAGING

Pullback length:	54 mm, 75 mm
Frame rate:	180 frames/sec
Frame density:	5- and 10-frames/mm
Lines per frame:	500
Scan diameter:	10 mm, in contrast
Axial resolution:	15 $\mu$ m, nominal

#### GENERAL

Size (mm):	1430 x 471 x 683 (h x w x d)
Weight:	95 kg
Power:	100/120/220/240V~; 50-60Hz; 400VA

#### DRAGONFLY™ Duo

Usable length:	135 cm
Outer diameter:	2.7 F (distal)
Wire lumen:	0.014"

#### PRESSUREWIRE AERIS

##### PressureWire Aeris (175 cm)

Pressure range:	-30 to +300 mmHg
Pressure accuracy:	$\pm 1$ mmHg plus $\pm 1\%$ of reading (< 50 mmHg) $\pm 3\%$ of reading (> 50 mmHg)

##### A0 pressure via Wi-Box to ILUMIEN OPTIS

Operating pressure:	-30 to +300 mmHg
Accuracy:	$\pm 1$ mmHg or $\pm 1\%$ of reading, whichever greatest

##### A0 pressure via Wi-Box to hemodynamic recording system

Max pressure shift:	< 2 mmHg
Transducer standard:	ANSI/AAMI BP22 – 1994



ST. JUDE MEDICAL™

ORDERING INFORMATION

Reorder Number	Description
C408650	ILUMIEN OPTIS System Contents: OCT Imaging Engine, installed PCI Optimization software package, Drive-Motor and Optical Controller, ILUMIEN OPTIS Custom Computer, Operator's Monitor - High Resolution LCD 17", Physician's Monitor - High Resolution LCD 19", Integrated Mobile Console, Keyboard and Mouse, Accessory Tools and Operator's Manual. (1 unit per box)
C12058	PressureWire Aeris, 175 cm
C12783	Wi-Box (1 unit per box)* * One Wi-Box is needed for each cath lab where ILUMIEN OPTIS or RadiAnalyzer™ Xpress is used. Cables for initial installation are available separately. Please refer to your St. Jude Medical product catalog.
C408643	Dragonfly Duo Imaging Catheter, Sterile DOC Cover and 1 Sterile 3 ml Syringe are provided with the catheter.
200-700-00	Sterile DOC Cover
C408647	Sterile 3 ml Syringe



The familiar gold color and Golden Image™ of OCT from St. Jude Medical.

**Global Headquarters**  
One St. Jude Medical Drive  
St. Paul, Minnesota 55117  
USA  
+1 651 756 2000  
+1 651 756 3301 Fax

**St. Jude Medical Cardiovascular & Ablation Technologies**  
5050 Nathan Lane North  
Plymouth, Minnesota 55442  
USA  
+1 651 756 5400  
+1 651-756-5470 Fax

**St. Jude Medical Systems AB**  
Box 6350  
SE-751 35 Uppsala  
Sweden  
+46 18 161000  
+46 18 161099 Fax

**LightLab Imaging, Inc.**  
One Technology Park Drive  
Westford, Massachusetts 01886  
USA  
+1 978 399 1000

**U.S. Division**  
6300 Bee Cave Road  
Building Two, Suite 100  
Austin, Texas 78746  
USA  
+1 512 286 4000  
+1 512 732 2418 Fax

**SJM Coordination Center BVBA**  
The Corporate Village  
Da Vincilaan 11 Box F1  
1935 Zaventem, Belgium  
+32 2 774 68 11  
+32 2 772 83 84 Fax

**St. Jude Medical (Hong Kong) Ltd.**  
Suite 1608, 16/F Exchange Tower  
33 Wang Chiu Road  
Kowloon Bay, Kowloon  
Hong Kong SAR  
+852 2996 7688  
+852 2956 0622 Fax

**St. Jude Medical Brasil Ltda.**  
Rua Itapeva, 538  
5º ao 8º andar  
01332-000 – São Paulo – SP  
Brazil  
+55 11 5080 5400  
+55 11 5080 5423 Fax

**St. Jude Medical Australia Pty. Ltd.**  
17 Orion Road  
Lane Cove, NSW 2066  
Australia  
+61 2 9936 1200  
+61 2 9936 1222 Fax

**ILUMIEN.com**  
**SJMprofessional.com**



**Rx Only**

Please review the Instructions for Use prior to using these devices for a complete listing of indications, contraindications, warnings, precautions, potential adverse events and directions for use. Product referenced is approved for CE Mark.

PressureWire Aeris, Wi-Box and RadiAnalyzer are designed, developed and manufactured by St. Jude Medical Systems AB. Dragonfly Duo and ILUMIEN OPTIS are designed, developed and manufactured by LightLab Imaging, Inc. Unless otherwise noted, ™ indicates that the name is a trademark of, or licensed to, St. Jude Medical or one of its subsidiaries. ST. JUDE MEDICAL and the nine-squares symbol are trademarks and service marks of St. Jude Medical, Inc. and its related companies. © 2013 St. Jude Medical, Inc. All Rights Reserved.

C-00048 Item GMVASC529EN

